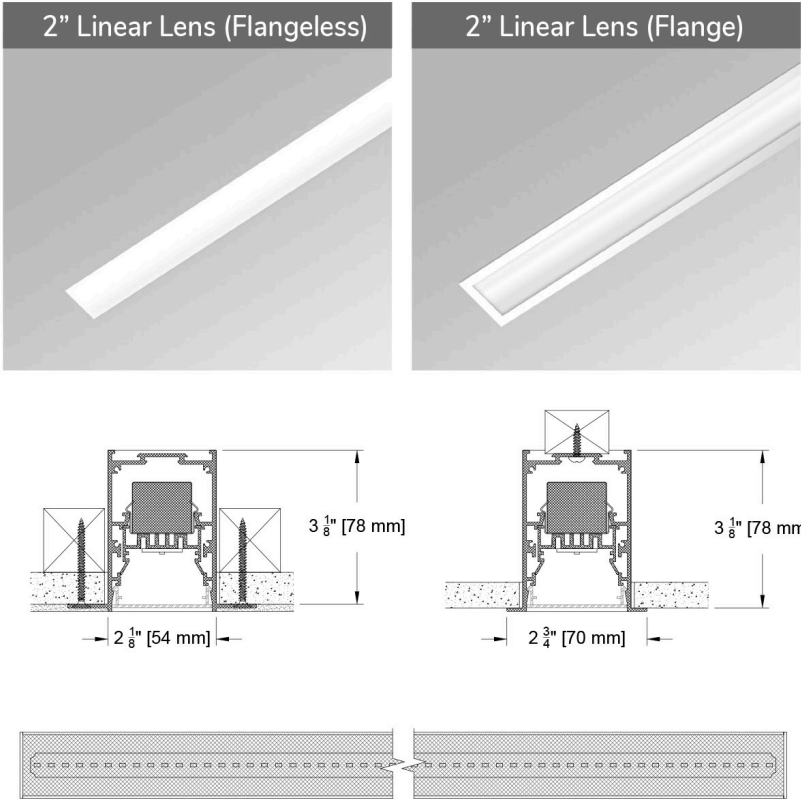


The Slice Family

Illuminate your space with precision Slices of homogeneous light. The Slice family offers linear 1" and 2" wide profiles in recessed and below ceiling options in lensed and multi-cell configurations. The 2" lensed recessed fixture offers both flanged and flangeless trim option, delivers over 750 lumens per foot with a modular design allowing continuous homogenous light to your specified length. With a Lambertian type distribution of ~100°, the fixture is perfect as a general continuous linear illumination device. You have found the 2" lensed recessed Slice and we hope you enjoy the details.



PROJECT: TYPE:
SPECIFIER: DATE:

Key Points (SL2DC-LRC)

Trim

- Flange or Flangeless
- 14 color options + Custom and RAL# available

Source Optics

- Over 80 lumens per watt per foot
- Up to 790 lm/ft available
- **TITLE 24** Fixture photometrics support CA Title 24 part 6 compliance meeting requirements of JA8
- Even illumination with wide (~100°) lambertian type distribution
- 1' minimum board length. Depending on specified length, ends may have unlit area. Request submittal drawing if definition is required
- CCT offerings - 2700k, 3000k, 3500k and 4000k
- 90+ CRI and 50+ R9
- Lifetime: L87 50k hours (Tc 85°C)

Housing

- Specify to desired length for even continuous light
- Minimum 2' length for integral driver and appropriate driver loading
- Lengths longer than 8' are assembled in field with supplied joiners
- IC Airtight housing supports CA Title 24 part 6 compliance to JA8 requirements
- Damp listed

Driver And Control

- Integral Driver standard - remote upon request
- 0.1% dimming availalbe in 0-10 or DALI-2 protocols
- Flicker Free to IEEE 1789-2015 no effect to low risk
- Universal 120v to 277v

Lumens per Foot Photometrics				
2" Linear Lensed		Performance/Foot		
Source	System watts (W/ft)	Delivered Lumens (lm/ft)	Lumens/ Watt/ft	Peak cd
F4	5	395	82	165
F8	10	790	82	334

Ordering Codes

PROJECT:

SPECIFIER:

DATE:

TYPE:

QUANTITY:

Ordering Code Example: SL2DC-LRC-AF-450"-F8-30-SY2-P16

FIXTURE	MOUNTING	LENGTH	SOURCE / WATTS	CCT	DRIVER / CONTROL	TRIM FINISH	ACCESSORIES
SL2DC-LRC							
Slice 2" Continuous Linear Recessed Lensed Downlight	<div>Flanged Housings</div> <div>AF Supports CA T24 part 6 compliance meeting JA8 Requirements</div> <div>Flangeless Housings</div> <div>AP Supports CA T24 part 6 compliance meeting JA8 Requirements</div>	<div>Specify exact length in inches*^</div> <div>*Minimum length of 24 inches required (2 modules)</div> <div>^Minimum board length of 12" (1 module)</div> <div>Note: Depending on length specified, ends may have unlit area. Please request submittal drawing if unlit area definition is required.</div>	<div>F4 5W 395Lm 90+CRI, 50+R9 values per foot</div> <div>F8 10W 790Lm 90+CRI, 50+R9 values per foot</div> <div>Supports CA Title 24 part 6 compliance meeting JA8 requirements</div>	<div>27 2700K</div> <div>30 3000K</div> <div>35 3500K</div> <div>40 4000K</div>	<div>SY1 0-10 1.0%, UNV (120-277V) linear</div> <div>SY2 0-10 1.0%, UNV (120-277V) log</div> <div>EldoLED</div> <div>E1 0-10 0.1%, UNV (120-277V) log</div> <div>E2 DALI-2 0.1%, UNV (120-277V) log</div> <div>E3 0-10 0.1%, UNV (120-277V) linear</div> <div>Note: Integral driver standard. Remote mounting upon request</div>	<div>Standard</div> <div>B Black Paint</div> <div>Optional</div> <div>W White Paint</div> <div>PXX Specialty Paint Color* P01-P15</div> <div>C Custom/RAL Color*</div> <div>*See Finish Guide</div> <div>FINISH GUIDE LINK</div>	<div>CP Chicago Plenum</div>

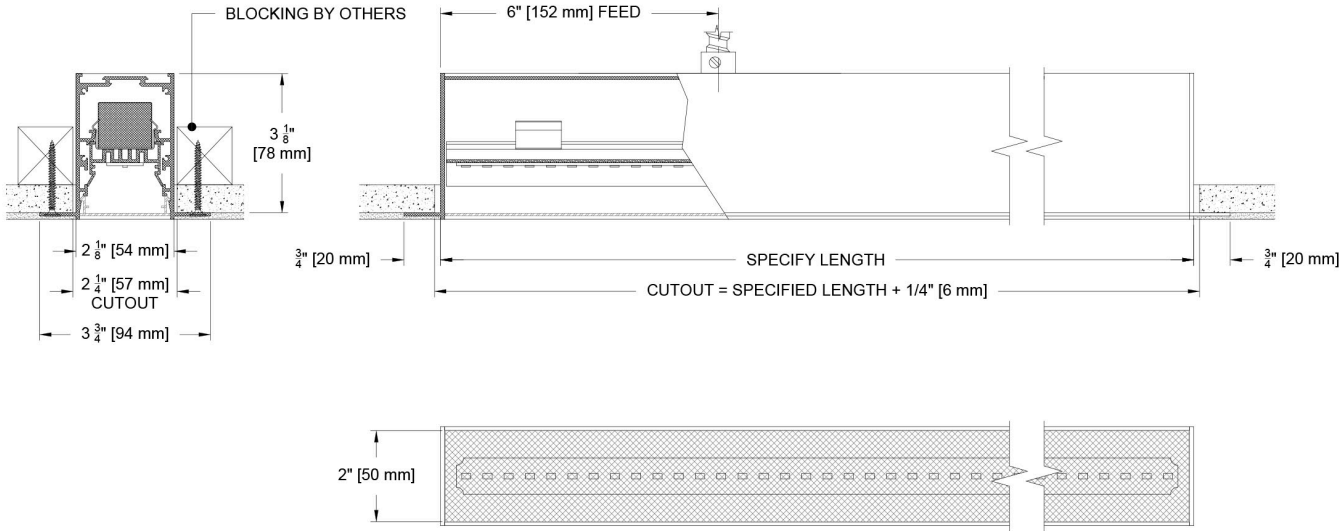
Ceiling Cutouts and Dimensions

Minimum 2' length. Minimum board length of 12". Depending on length specified, ends may have unlit area. Request submittal drawing if unlit end area definition is required.

SL2DC- Recessed Flangeless Mount

AP

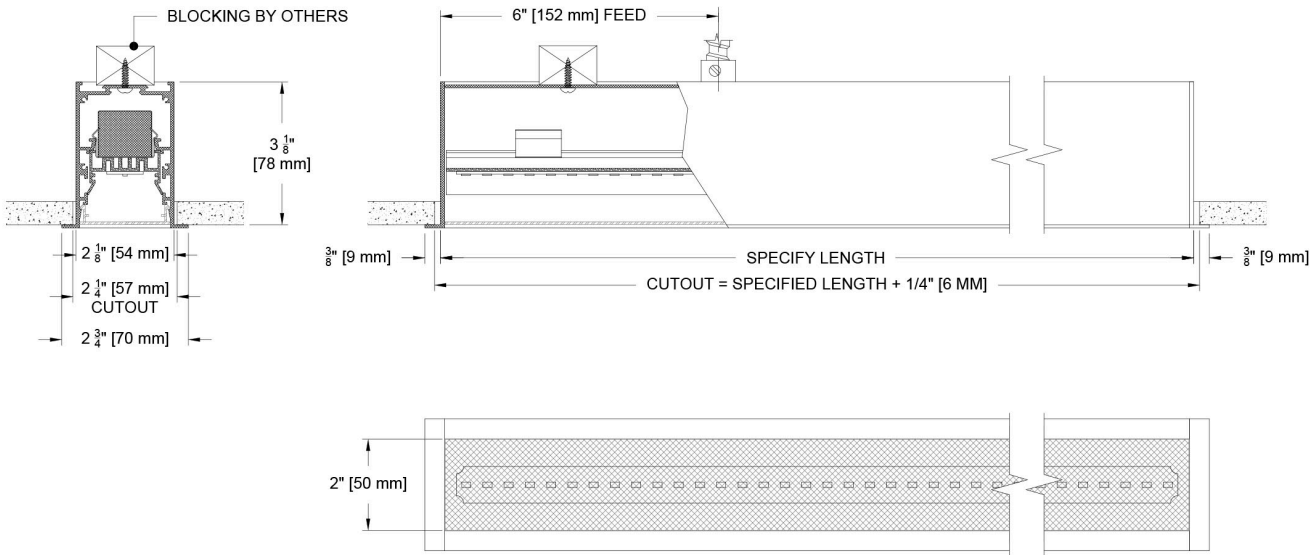
(SL2DC-LRC-AP-)



SL2DC- Recessed Flange Mount

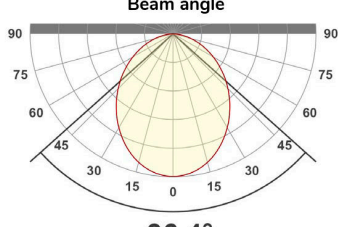
AF

(SL2DC-LRC-AF-)



Photometric Table

Values are per foot. All flux measurements are delivered lumens based on 3000K and 1' (ft) length from production representative product. Flux can vary +/- 10% from source manufacturers rated flux range. Measurements taken with standard lens in a black housing. System watts are based typical source datasheet power values + 20% driver losses. Efficacy values will vary based on length and driver load.

Lumens per Foot Photometrics				
2" Linear Lensed		Performance/Foot		
Source	System watts (W/ft)	Delivered Lumens (lm/ft)	Lumens/ Watt/ft	Peak cd
F4	5	395	82	165
F8	10	790	82	334
CCT Multiplier		<div>Beam angle</div>  <div>96.4°</div>		
CCT	Citizen			
2700	0.96			
3000	1.00			
3500	1.03			
4000	1.04			
All measurements are delivered lumens/ft. ISO CD plot based on F4 source				

Color Data

All data is based from goniometer measurements of production representative product. All lumen values can vary +/- 10% from LED manufacturer rated data range. Measurements at 3000 CCT unless otherwise noted.

F8 and F4 Linear Board

- <3 MacAdam Ellipse (<3 SDCM)
- 90+ CRI and RF
- 50+R9, Hue Bin 1 and 16

